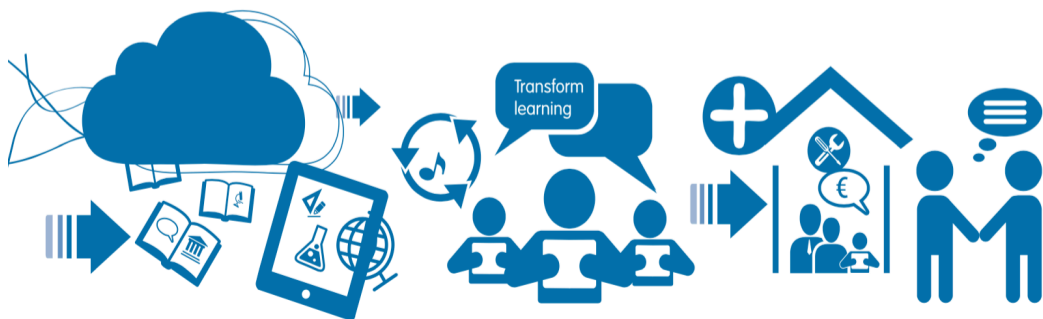




# iPad in Education

## Information for Parents



Presentation Secondary School

# Benefits of using Technology in the Classroom

## Changing Times

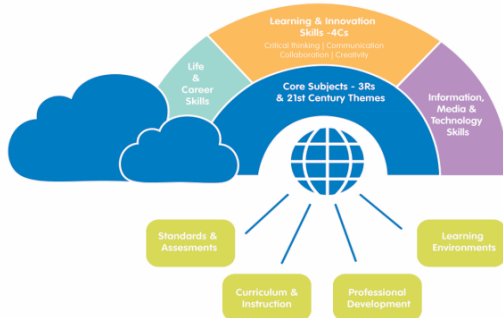
Classrooms today are largely unchanged since the industrial revolution, and yet, the rest of the world has changed enormously since then. To succeed in a competitive global economy, employers are looking for creative staff who are fresh and possess modern skills; they need to be able to work in groups, to pose and solve complex problems and be able to communicate across teams and borders.

## 21st Century Skills

Students are naturally creative and innovative; they will also develop new critical thinking productivity and leadership skills, which will enable them to be responsible, self-directed learners and employees.

## Content

An endless amount of content is available through the use of devices in the classroom – Today, almost all textbooks have been converted to a digital version to deal with the issue surrounding the weight of the schoolbag. The devices allow students instant access to the latest news, information, statistics etc.



## Develop Organisational Skills

Students will become more organised and efficient as they will no longer need to spend as much time at school lockers or taking notes that they could misplace/forget. All the students content will be stored in the one place – The Device.

## ePortfolios

Student will undergo continuous assessment as part of the new Junior Cycle and ePortfolios will be part of how students present their work.

## Fun Learning Environment

Research shows that students who are engaged in their learning will naturally perform better; technology allows teachers to find even more ways of engaging the variety of learning styles in their classroom.

## Why iPad?

iPad is the educational professional's first choice. In fact, Apple iPad holds a staggering 94% of the Educational Market for Tablets.



Learning



Community



Life

## What happens now?

When the online store opens you will need to place an order for your child's Wriggle Bundle within the allocated timeframe in order to ensure the device is setup for the deployment day. These steps have been outlined below;

### Place your order:

- From 25<sup>th</sup> May to 20<sup>th</sup> July please visit [www.wriggle.ie](http://www.wriggle.ie) and select "Order Online"
- When requested, please input the store login code specific to Presentation Wexford
  - **27850241**
- Select the requirements for your child's Wriggle Bundle.
- Select your Payment Method.
- Once your order is complete you will receive an order number for your records.
- Your child will receive their Wriggle Bundle on the deployment day, 20<sup>th</sup> and 21<sup>st</sup> August

### Deployment Day:

- On the deployment day the Wriggle Team meet with the students in groups of 20/25 where the iPads are provided with all content pre-loaded.
- Students are shown where their eBooks and educational applications are on their iPad as well as advised on best practice for iPad use in school.
- If there were Physical Books purchased via the Online Store the school will decide if they will be distributed on the day or at a later date.

## What's included in the Wriggle Bundle?

*All device specifications & prices correct as of January 2018. Subject to change.*

- iPad 32GB **€399** OR iPad 128GB **€489**
- Heavy Duty Case for iPad Air 2 **€45**
- Wriggle Services and Support for Wriggle iPad **€99**

**OR**

- Wriggle Services and Support for a BYOD **€149**
  - Setup of all eBook accounts and iPad configuration
  - Deployment Workshop
  - Mobile Device Management (3yr license)
- eBooks **€270** (approx)
- Educational apps (chosen by the school)
- Insurance offering available at time of purchase or alternatively at [www.wriggle.ie/insurance](http://www.wriggle.ie/insurance)

**\*\*Late fee – Any orders placed after 20<sup>th</sup> July will incur a €50 late fee\*\***



## Key Dates & Important Information

.....

Online Store Opens: 25<sup>th</sup> May

Online Store Closes: 20<sup>th</sup> July

Deployment Day: 20<sup>th</sup> & 21<sup>st</sup> August

**Please note:** A late fee of €50 will be charged on ALL orders placed after the store closing date. Please avoid this cost by ordering before the closing date listed above.

## Need more info?

<b>Contact</b>	<b>Wriggle</b>	<b>Presentation Secondary School</b>
Website	<a href="http://www.wriggle.ie">www.wriggle.ie</a>	<a href="http://www.preswex.ie">www.preswex.ie</a>
Call	(01)500-9060	(053)9124133
E-Mail	<a href="mailto:info@wriggle.ie">info@wriggle.ie</a>	<a href="mailto:generaloffice@preswex.ie">generaloffice@preswex.ie</a>

Connect with us!

twitter.com/Gowriggle  
facebook.com/Gowriggle



**Solution  
Expert**  
Education